



Longfellow Avenue,

Offers Over £730,000

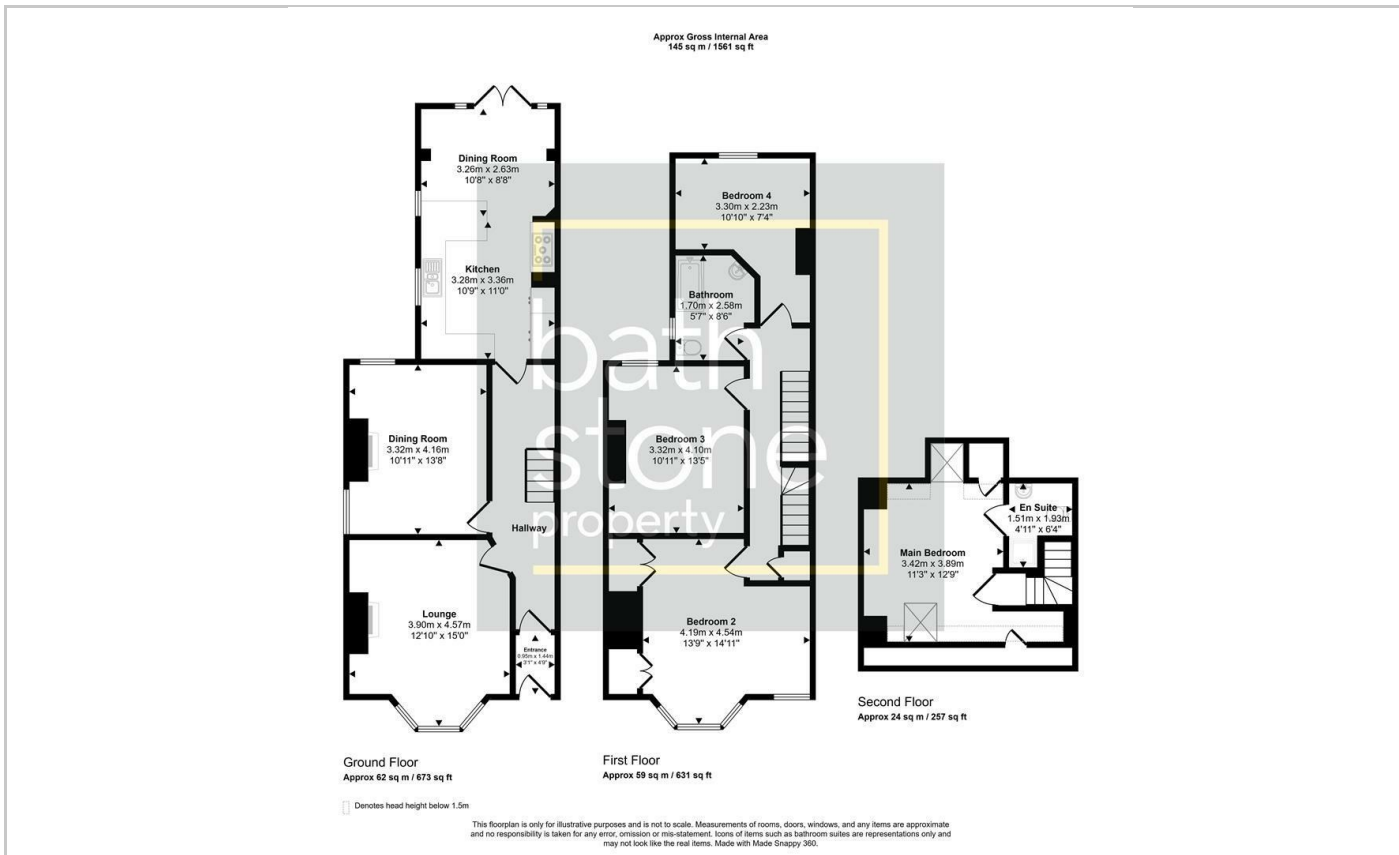
FOR SALE



- No Chain
- Four Bedrooms
- Character
- End Terrace
- Two Reception Rooms
- Open Plan Kitchen Dinner

THE PROPERTY

Vendor comments, "What caught my eye about Longfellow Avenue was its superb location in the historic city of Bath. Being an end-of-terrace property offered extra privacy and character. It is close to the city centre, excellent restaurants and cafés, while also benefiting from easy access south-east to a beautiful nearby park."



| Energy Efficiency Rating | | Current | Potential |
|---|--|----------------------------|-----------|
| Very energy efficient - lower running costs | | | |
| (92 plus) A | | | |
| (81-91) B | | | |
| (69-80) C | | | 77 |
| (55-68) D | | | |
| (39-54) E | | 50 | |
| (21-38) F | | | |
| (1-20) G | | | |
| Not energy efficient - higher running costs | | | |
| England & Wales | | EU Directive 2002/91/EC | |